

# Welcome to the WorkLight Honolulu Challenge Weekend

We're so glad you're joining us! To make your arrival smooth, please review the details below.

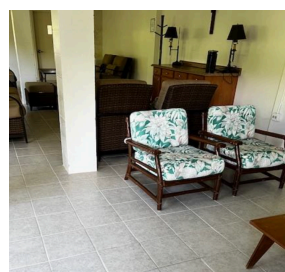
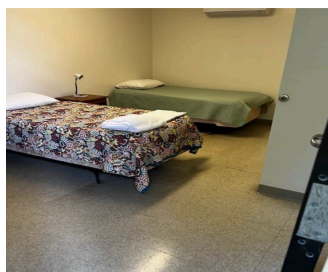
## Parking Instructions

- Please enter through the **main entrance** of [Saint Anthony Retreat Center](#).
- Follow the signs marked **WorkLight Challenge Weekend**.
- Parking attendants/volunteers will help guide you to the correct area.



## Rooms & Lodging

- When you check in, you'll receive your **room assignment**.
- Bedding and towels are provided unless otherwise noted.
- If you need special accommodations, please let the team know at check-in.
- We've created a packing list for you to ensure you have everything you need for the weekend. **Download it now.** If you need a special accommodation, let our team know and we'll do our best to help.





## Check-In Process

- **Location:** St. Damien House Entrance Area
- **Time:** Friday from **5–6:15 PM**
- At check-in you'll receive:
  - Name badge & lanyard
  - Participant manual (with schedule, song lyrics, and more)
  - Your room assignment
  - Group number assignment



## What to Do After Arrival

1. Park, head to the registration table and check in.
2. Bring your belongings inside.
3. Get settled into your room.
4. Join us for the opening session at 6:20 PM. Doors open at 6:00PM.



## Need Help?

If you have questions when you arrive, call or text:

**Kalani Ayau**

**(808) 840-9793**

We're looking forward to an incredible weekend together—see you soon!